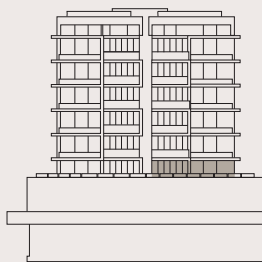


**Strata Areas**

- Internal Floor Area...253m<sup>2</sup>
- Terrace ..... 189m<sup>2</sup>
- Store ..... 8m<sup>2</sup>
- Parking bays (2).....29m<sup>2</sup>
- TOTAL .....479m<sup>2</sup>**



NORTHERN ELEVATION

